



BRAKE-BOSS® TRACKMASTER

Building technology that makes your rail yard more productive and efficient

OVERVIEW

The Brake-Boss TrackMaster is an advanced automated Class 1 air-brake testing device designed to enhance rail yard operations. It integrates with existing yard air supplies, connecting via an air inlet port and the air supply port. This setup, installed adjacent to outbound tracks, streamlines testing by automating the process, reducing testing time, costs, and human error. The device's remote control capability through the Brake-Boss app further enhances efficiency, allowing car inspectors to manage tests from within the yard and access real-time results. The TrackMaster's ability to handle individual tracks makes it a versatile tool for rail yards aiming to improve turnaround times and operational reliability.

EASILY INSTALLED

The Brake-Boss TrackMaster is a remarkable tool housed in a durable case that boasts a proven track record for ruggedness, waterproofness, and resilience in harsh environments. You can easily integrate the TrackMaster into your existing yard ground air configuration by simply installing this device between your ground air supply and your air hose connection to your train. Once installed, maintenance is minimal with required annual calibrations that can be performed on-site by a designated employee.

ANALYTICS

Results from the Brake-Boss TrackMaster brake tests can be accessed online via the Brake-Boss Dashboard, where you analyze results, print or download brake slips, or download test data. The dashboard also displays calibration due date, pressure/flow setpoints, and local temperature and weather.

BRAKE-BOSS APP

Brake tests can be conveniently performed from a mobile device with the Brake-Boss app installed[†]. The car inspector can release and set brakes while walking the train, as well as perform a complete brake test remotely using the app. Users have the ability to review recent test results. Supervisors can also remotely monitor active brake tests in real time. The app also connects you to the Brake-Boss Dashboard to enable you to view your data from anywhere.

[†]available for iOS or Android devices



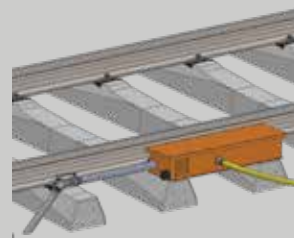
TOP / SIDE VIEW - AIR SUPPLY PORT



SIDE - AIR CONNECTIONS



AIR INLET
& VENT



TYPICAL INSTALLATION



BRAKE-BOSS TRACKMASTER

SPECIFICATIONS

DIMENSIONS	10.5"W x 37.5"L x 6.55"H 26.6cm W x 92.25cm D x 16.6cm H
WEIGHT	55 lbs 25 kg
POWER	24 Volts / Low Voltage A/C
DATA CONNECTIVITY	Cellular
OPERATING TEMPERATURES	-30°F to 120°F -35°C to 49°C
AIR REQUIREMENTS	Regulated clean yard air per ISO 8573-1 [†]
AIR CONNECTION	Inline with existing track ground-air supply line

[†]ISO 8573-1:8.4.4 defines the quality classes of compressed air produced by air generation and treatment units (AGTUs) and/or used in pneumatic apparatus and systems of rail vehicles.



For more information on Brake-Boss
contact us or visit thebrakeboss.com



Brake-Boss®
www.thebrakeboss.com | 800-597-5008